

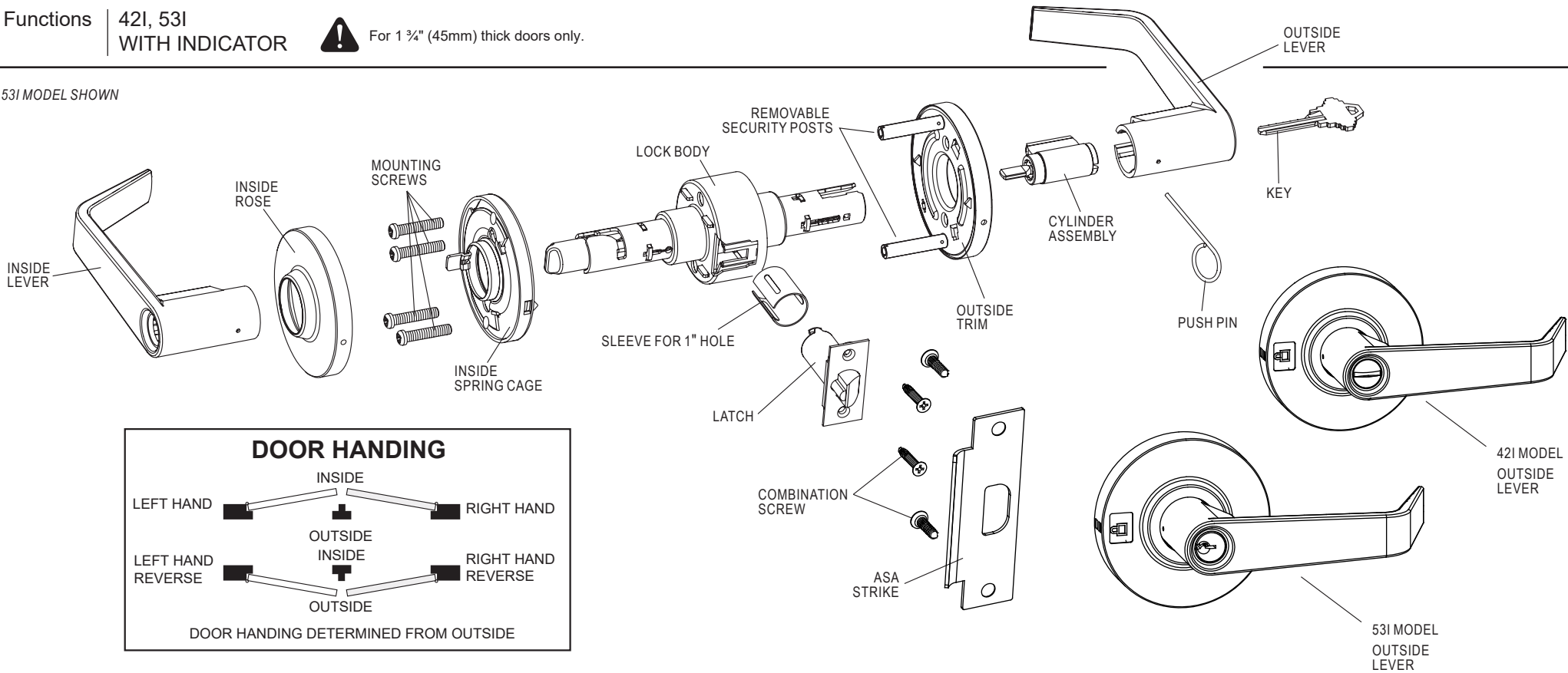
DOREX® RW

Functions 42I, 53I  
WITH INDICATOR

For 1 3/4" (45mm) thick doors only.

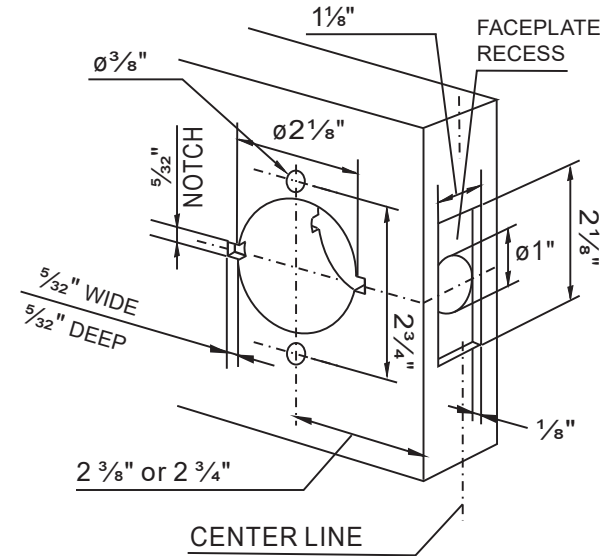
INSTALLATION INSTRUCTIONS

53I MODEL SHOWN

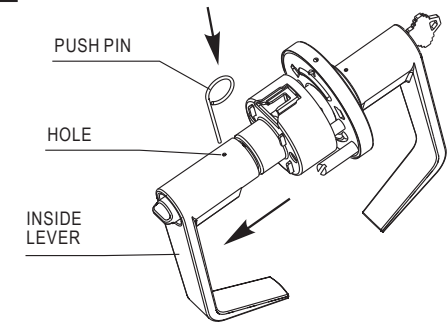


Door Preparation

1. Fold template over edge of door and mark holes.
2. Drill a 2 1/8" hole through the face of the door.
3. Drill two 3/8" thru bolt holes through face of door.
3. Drill a 1" hole in edge of door.
4. Cut 5/32" notches on 2 1/8" hole on both sides of door. (Very important if not using thru bolts.)
5. Mortise latch unit front  
2 1/4" x 1 1/8" x 1/8"

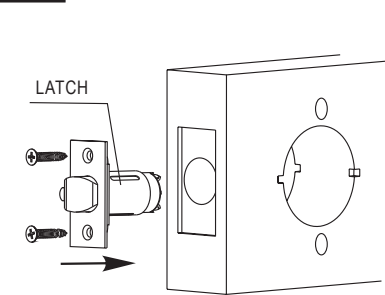


1 DISASSEMBLE INSIDE LEVER

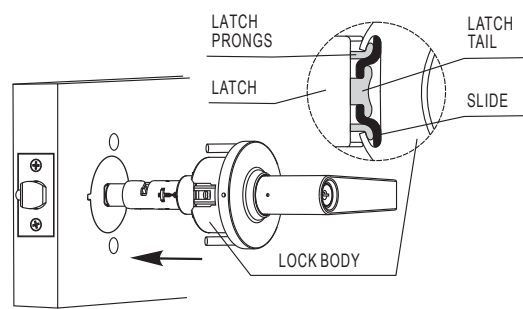


1A: Insert push pin into hole to depress catch and remove the lever.

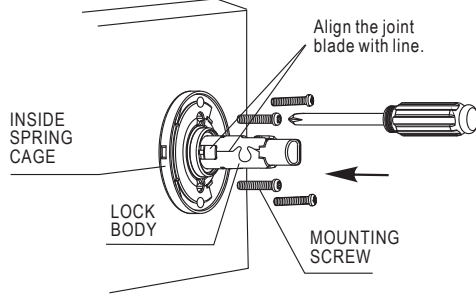
2 INSTALL LEVERSET TO DOOR



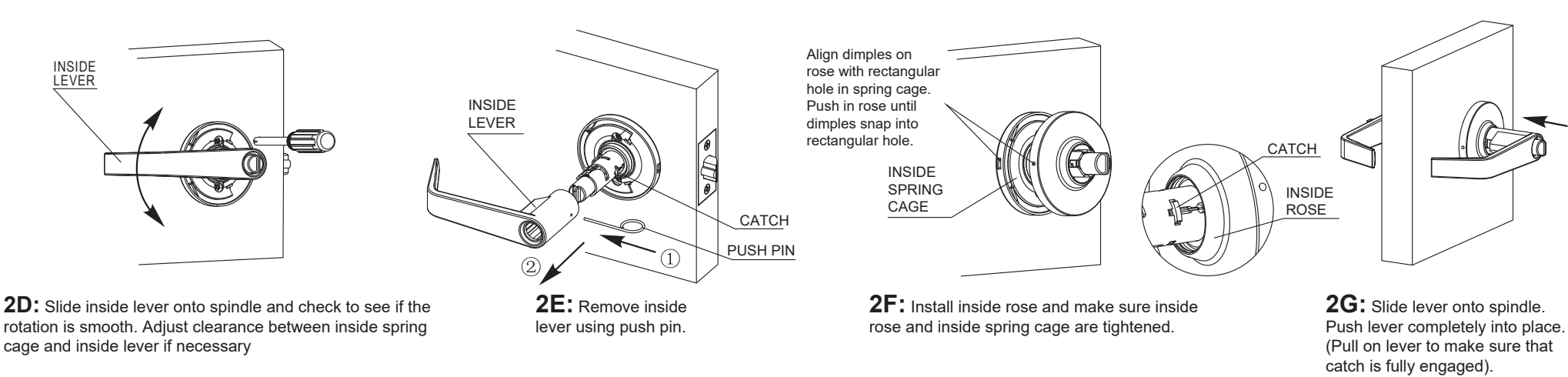
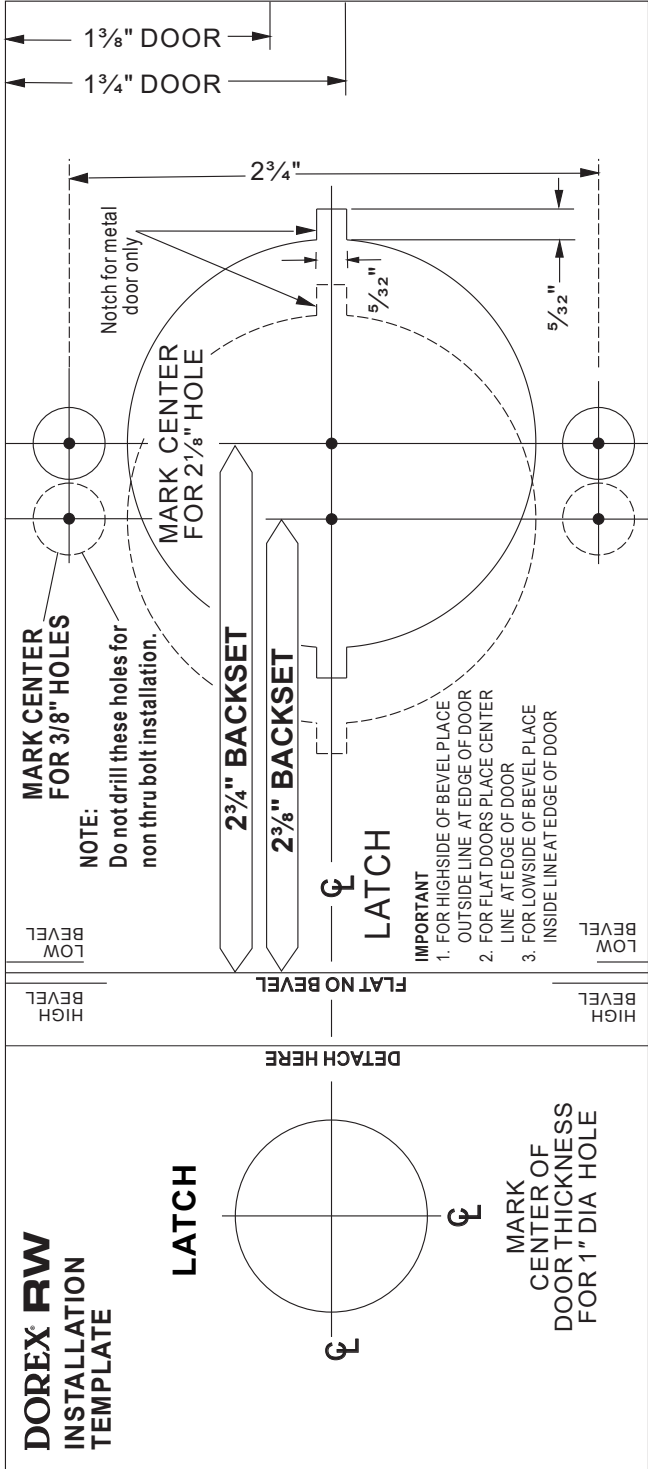
2A: Insert latchbolt and secure with combination screws.



2B: Place lock body into position. Make sure that latch prongs engage chassis in housing, and slide engages latch tail.

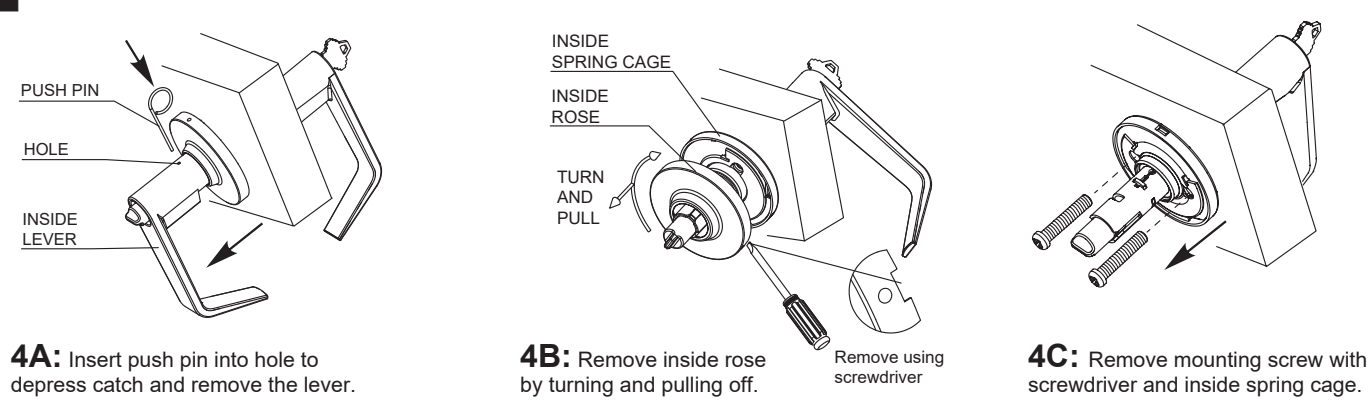
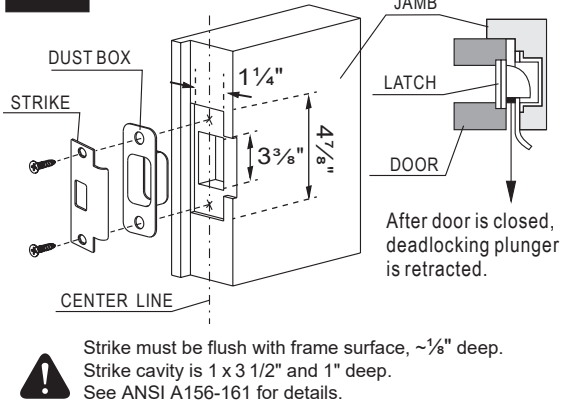


2C: Install inside spring cage, screws should be hand tightened all the way down with a screwdriver.



### 3 INSTALL STRIKE

### 4 INSTRUCTIONS FOR REMOVING AN INSTALLED LOCK FROM THE DOOR



### 5 INSTRUCTIONS FOR CYLINDER REPLACEMENT

