

Introducing the **DOREX RW** commercial cylindrical door lock with lock/unlock indicator. Perfect for busy public and business spaces requiring a reliable and robust occupancy or privacy indicator to ensure a secure and accessible environment.

- Cylindrical lever with lock indicator for light to moderate traffic applications
- Conforms to ANSI/BHMA A156.2, Series 4000, Grade 2
- cULus listed, 3 hr fire rating
- UL 10C Positive Pressure Rated
- Meets ADA requirements
- 1 Year limited warranty
- For doors 1 3/4" (45 mm) thick
- Non-handed
- 2 3/4" (70 mm) backset
- 2 3/8" (60 mm) backset available
- Stainless steel latch with 1/2" (12.7 mm) throw
- Removable security posts
- 3 3/8" (86 mm) diameter rose
- Sealed lock indicator window to prevent tampering and improve weather resistance
- Concealed mounting plate and screws
- ASA strike
- Privacy function with auto-release
- Entry function includes 6-pin Schlage "C" cylinder with 2 keys



SATIN CHROME

FUNCTIONS

- 42I Privacy (auto-release) with indicator
- 53I Entry with indicator ➡

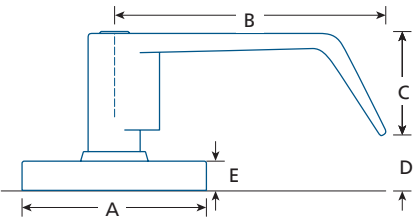
RW	H	42I	—	C26D	—	238
SERIES	STYLE	FUNCTION		FINISH		OPTION
	H: Standard Return	42I: Privacy w/ indicator		26D: Satin Chrome		238: 2 3/4" (60mm) Backset
		53I: Entry w/ indicator (k)				



Entry - 53I



Privacy - 42I



A	B	C	D	E
3 3/8 (85.7)	4 3/4 (120)	2 1/8 (54)	7/16 (11)	9/16 (14.3)

IN (MM)