

DOREX® T300 COMBO

Electronic Entry Handleset

Installation Instructions

READ THIS FIRST

1. Please read these installation instructions carefully before installing or using this door lock. Pay special attention to items marked **⚠**.
2. **Do not install on hollow doors without proper reinforcement.** Door must provide an proper solid wood lock stile or reinforcement at required location. Without adequate support, the installation may warp or bow the door surface and prevent the lock from functioning properly.
3. These instructions are meant for field installation or preparation on a wood door and frame. Not recommended as preparation documents for door manufacturing. Please request documentation for door manufacturing or hollow metal door and metal frame preparation or visit www.dorex.com.
4. **Do not use power tools** to install door hardware. Excessive tightening of screws or bolts may affect the installation and/or lock function.
5. This document describes a recommended installation based on common product and industry standards. It is the responsibility of the installer to determine the validity or suitability of these recommendations for a particular purpose or installation.
6. These instructions should be passed on to the owner/operator on completion of installation.

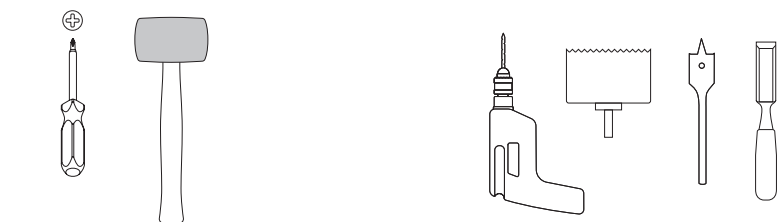
⚠ This document provided as-is, manufacturer reserves the right to make technical changes without prior notice.

LOCK MAINTENANCE

1. Check the door every three months to ensure the door has not become misaligned. Verify the lock is properly secured and functions properly and smoothly.
2. Lubricate keyed locks using silicone spray or graphite powder lubricants sparingly. Spray a small amount of lubricant into the keyway. Then, run the key in and out of the lock repeatedly, wiping any debris from the key each time. Lubricate locks annually, or when needed.

⚠ Do not use graphite powders if already using liquid lubricants.
Do not use petroleum based lubricants.

REQUIRED TOOLS



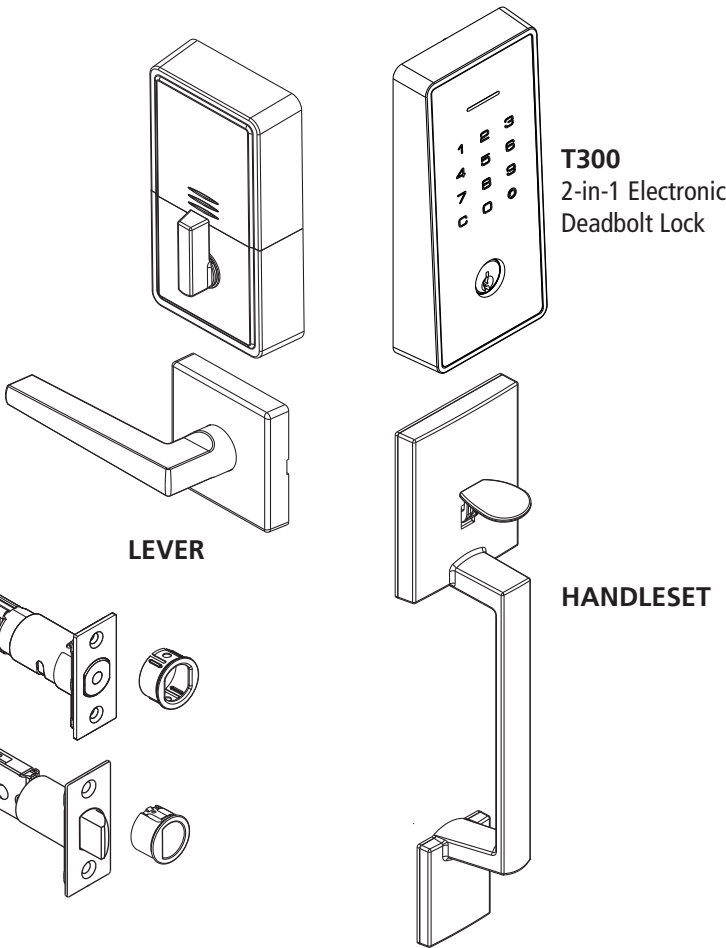
For lock installation:

- a. Philips-head screwdriver.
- b. Rubber mallet (optional).

⚠ Do not use power tools to install door hardware, excessive tightening of screws or bolts may affect installation or functioning.

For wood door and frame preparation:

- a. Power drill.
- b. 2-1/8" (54 mm) dia. hole saw
- c. 1" (25.4 mm) dia. spade drill bit.
- d. 1" (25.4 mm) wood chisel.
- e. 5/16" (8 mm) drill bit (optional).
- f. 1/8" (3 mm) drill bit (optional).



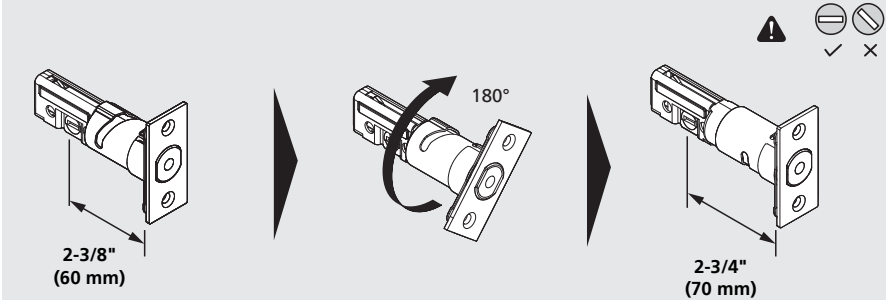
SCREW CHART

Handleset	Where Used	Quantity
AA. Flat Head #8-32 Combo Screw, 3/4" (19 mm)	Spring latch / deadbolt latch	4
BB. Flat Head #8-32 Machine Screw, 1-3/4" (44.5 mm)	Leverset / handleset	2
CC. Pan Head #8-32 Machine Screw, 1-3/8" (35 mm)	Handleset	1
DD. 2.5 mm Hex Key (Tool)	Lever	1
Electronic Deadbolt	Where Used	Quantity
A. Flat Head #12-24 Machine Screw, 2-1/4" (57 mm)	Deadbolt hash	2
B. Flat Head #12 Wood Screw, 3" (76 mm)	Security strike	2
C. Flat Head #8-32 Combo Screw, 1-1/4" (32 mm)	Strikes	5
D. Pan Head #8-32 Machine Screw, 3/4" (19 mm)	Battery pack	2

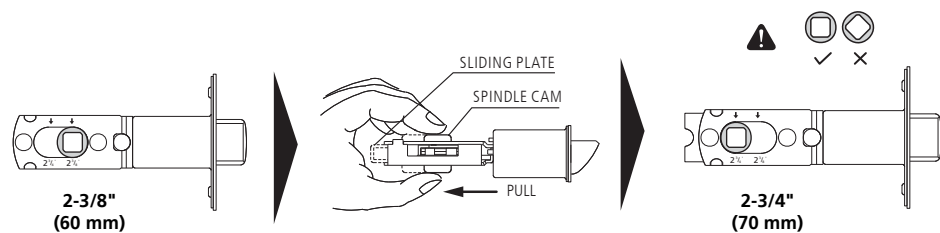
1a ADJUST BACKSET (If required)

⚠ BACKSET is preset at the factory to 2-3/8" (60mm). If a 2-3/4" (70 mm) backset is required please adjust as shown below.

ADJUST DEADBOLT



ADJUST SPRING LATCH



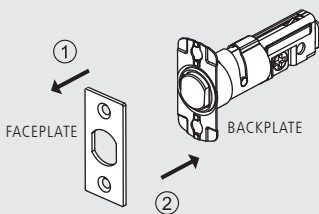
1b CONVERT FACEPLATE (If required)

⚠ If mortised faceplate for either the deadbolt or spring latch is converted to drive-in, any applied fire-rating will be nullified.

⚠ For drive-in type latches, we recommend an edge-bore of 31/32" (25 mm) diameter for a tighter fit.

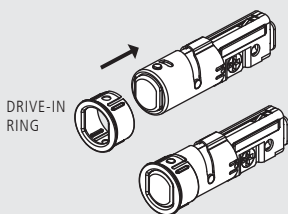
To change the deadbolt faceplate:

1. Use a flat screwdriver to separate the faceplate from the latch backplate.
2. Snap the selected faceplate onto the backplate.



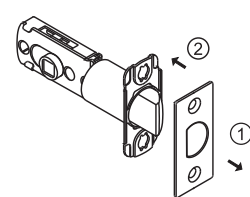
To change to drive-in:

1. Use a flat screwdriver to separate the faceplate and backplate from the latch.
2. Align ring as shown, then snap into place.



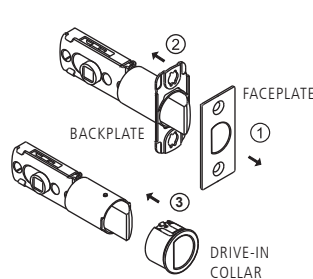
To change the deadbolt faceplate:

1. Use a flat screwdriver to separate the faceplate from the latch backplate.
2. Snap the selected faceplate onto the backplate.

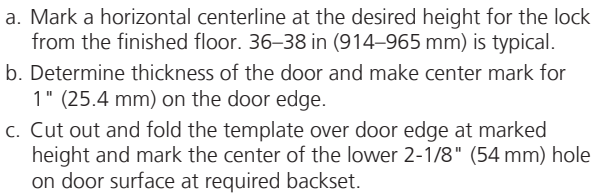


To change to drive-in:

1. Use a screwdriver to separate the faceplate and backplate from the latch.
2. Slide back the backplate to remove it.
3. Align ring as shown, then snap into place.

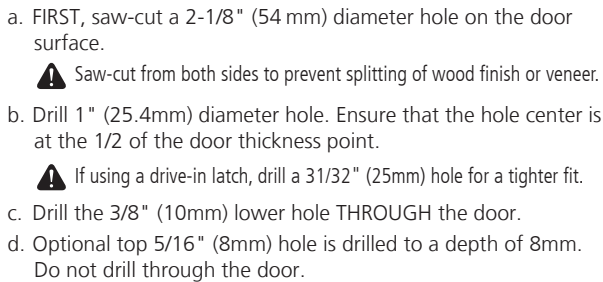


2 MARK DOOR

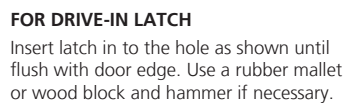
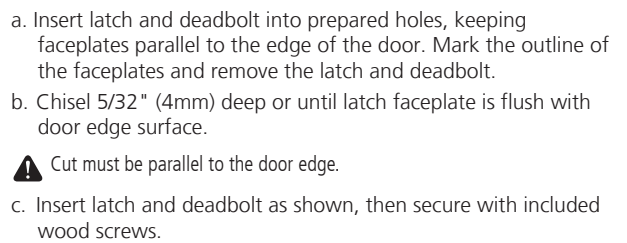


 Verify required backset marking or drilling.

3 DRILL HOLES



4 INSTALL LATCHES

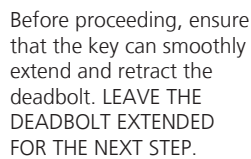
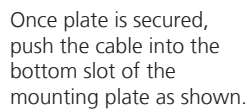
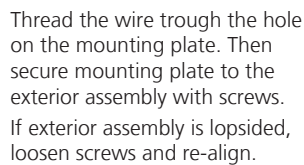


5 INSTALL HANDLE

6 INSTALL INTERIOR LEVER

7 INSTALL EXTERIOR ASSEMBLY

8 INSTALL MOUNTING PLATE



9 INSTALL INTERIOR ASSEMBLY

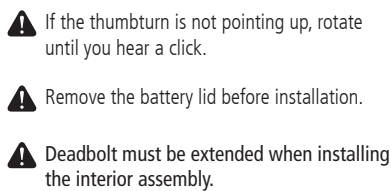
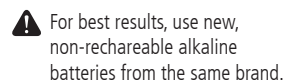


Diagram illustrating the removal of the front plate and the connection of the cable to the internal wiring.

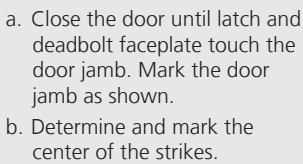
Step 1: Remove the front plate by unscrewing the screws (C) and (D).

Step 2: Connect the cable to the internal wiring, ensuring a tight connection and that the wire is not kinked.

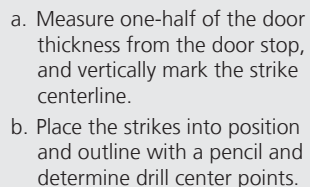
10 INSTALL BATTERIES



11 MARK DOOR FRAME



12 MARK STRIKE OUTLINES



13 DRILL HOLES & INSTALL STRIKES

