


DOREX[®] STRATA



The **STRATA** is the latest edition to the Tecnica Design collection of art-deco inspired, contemporary door levers. Whether you are upgrading your current door hardware or building a new home, the Strata is the obvious choice over common door lever styles. Elevate the look and feel of your home or building project today.

- Conforms to ANSI/BHMA Grade 3
- Meets ADA requirements
- 20 Minute fire-rating when installed with optional listed fire can¹
- Lifetime mechanical warranty
- 10-year limited finish warranty
- Tubular lockset with non-handed, zinc die-cast lever
- For doors $1\frac{3}{8}$ – $1\frac{3}{4}$ " (35–44.5 mm) thick
- Extension kit for $2\frac{1}{4}$ " (57 mm) thick doors available (#TDK100TE)
- Fits standard $2\frac{1}{8}$ " (54 mm) door preparation with 1" (25.4 mm) edge bore
- Stainless steel tubular spring latch with adjustable $2\frac{3}{8}$ – $2\frac{3}{4}$ " (60–70 mm) backset
- Mortised faceplate with square corners, convertible to drive-in
- Galvanized steel interior mechanism
- Privacy function with auto-release
- Available with round or square rose
- Full-lip strike with round corners included
- Concealed mounting screws
-  Available with magnetic tubular latch and invisible strike for seamless, minimalist installations²
- ASA strike for metal door frames available
- Other faceplate options available

- (1) Fire-can must be ordered in conjunction with lockset, not available separately. For use on fire labelled wood doors only.
 (2) Please contact your local representative for ordering details

15
SATIN NICKEL19
MATTE BLACK26D
SATIN CHROME

OTHER FINISHES
AVAILABLE BY
SPECIAL ORDER

FUNCTIONS

- 10 Passage
- 42 Privacy, with auto-release
- 5 Dummy, single (surface/thru-bolt)¹
- 3 Handleset interior trim^{2†}

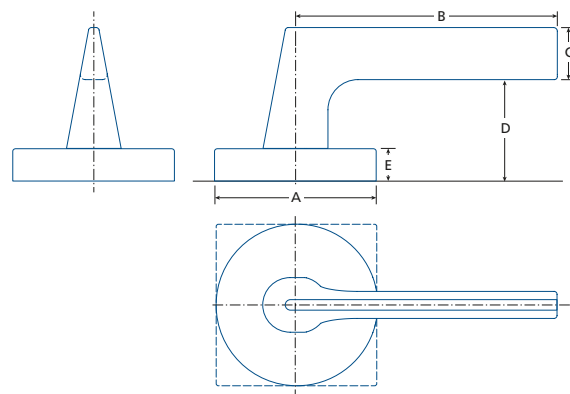
- (1) Can be installed back-to-back using thru-bolts
 (2) For use with Tecnica Design entry handlesets
 (†) Special order



SATIN NICKEL



MATTE BLACK



	A	B	C	D	E
STRATA	$2\frac{9}{16}$	$4\frac{9}{16}$	$\frac{7}{8}$	$1\frac{5}{8}$	$\frac{1}{2}$
ST/STS	(64.5)	(115.9)	(22)	(42)	(12.7)

IN (MM)

100	10	ST	S	15	M	—
SERIES	FUNCTION ¹	STYLE	ROSE ²	FINISH	LATCH ³	OPTION ⁴

(1) OMIT FUNCTION WHEN ORDERING DUMMY OR HANDLESSET TRIM OPTION

(2) BLANK : ROUND S : SQUARE (3) M : MORTISE V : DRIVE-IN (4) -3 : HANDLE TRIM -5 : DUMMY

