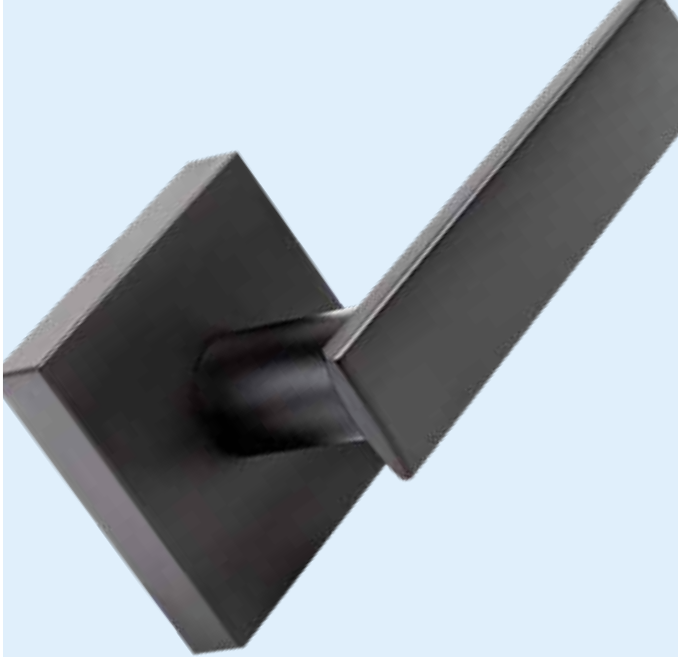
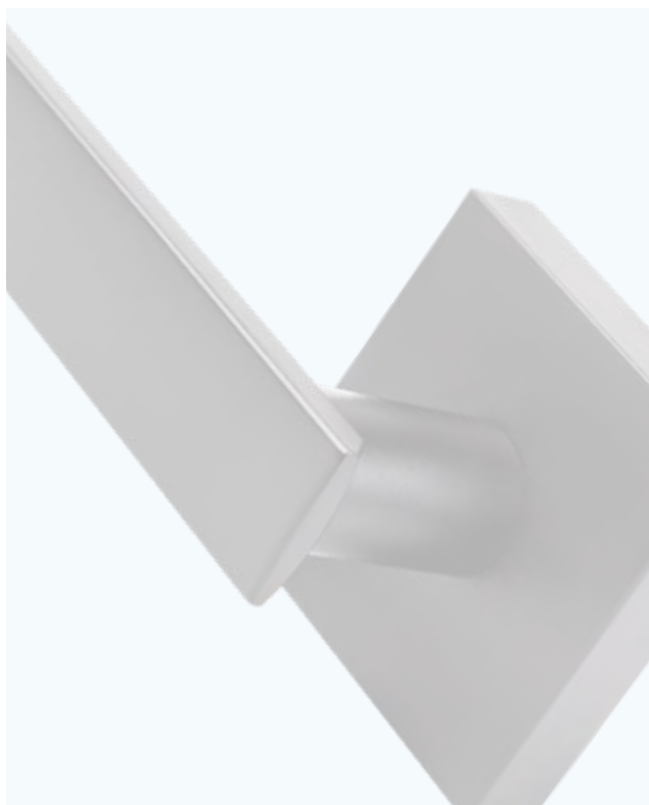


DOREX®

METRO





Levers

- All new collection of urban inspired, contemporary levers
- Non-handed and handed lever styles
- Privacy function with auto-release

- 1 year mechanical warranty
- 1 year limited finish warranty
- Non-handed or handed, zinc die-cast lever
- For doors $1\frac{3}{8}$ – $1\frac{3}{4}$ " (35–44.5 mm) thick
- Fits standard $2\frac{1}{8}$ " (54 mm) door preparation with 1" (25.4 mm) edge bore
- Steel tubular spring latch with adjustable $2\frac{3}{8}$ – $2\frac{3}{4}$ " (60–70 mm) backset
- 4-Way, mortise faceplate with square corners, convertible to drive-in
- Full-lip strike with round corners included
- Other faceplate options available

AVAILABLE FUNCTIONS

- 10 Passage
- 51 Entry (Livia only)
- 42 Privacy, with auto-release
- 17 Single Dummy (surface)



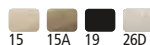
NERO
MATTE BLACK



ROSE



LIVIA
ANTIQUÉ NICKEL



ROSE



CASSIUS
SATIN CHROME



SELECTION GUIDE

V2X	42	Q	S	L	–	15	M
SERIES	FUNCTION	STYLE	ROSE ¹	HAND ²		FINISH	LATCH ³

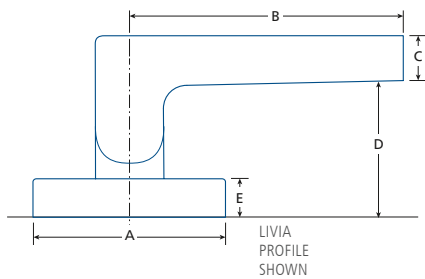
(1) BLANK: ROUND S: SQUARE (2) FOR CASSIUS INDICATE R: RIGHT HAND, L: LEFT HAND

(3) BLANK: 4-WAY; D: DRIVE-IN; M: FIXED MORTISE (SQ CORNER); MR: FIXED MORTISE (RND CORNER)

		10B OIL RUB. BRONZE	11P ANTIQUE BRONZE	15 SATIN NICKEL	15A ANTIQUE NICKEL	19 MATTE BLACK	26 POLISHED CHROME	26D SATIN CHROME	3 POLISHED BRASS	32D SATIN S.STEEL	4 SATIN BRASS	5 ANTIQUE BRASS	/CASE†
LIVIA	L			•	•	•		•					24
NERO	N			•		•		•					24
CASSIUS (HANDED)	Q			•		•		•					24

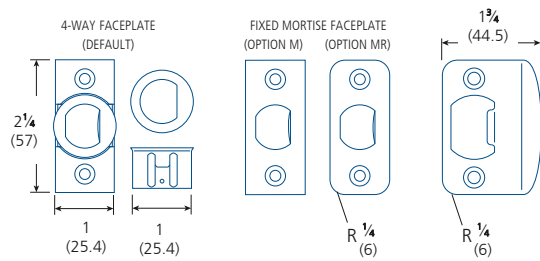
OTHER FINISHES/OPTIONS AVAILABLE, MINIMUM ORDER QUANTITIES AND/OR ADDITIONAL DELIVERY TIMES MAY BE REQUIRED – PLEASE CONTACT

(†) DUMMY ARE 30/CASE



	A	B	C	D	E
LIVIA L / LS	Ø 2 ⁹ / ₁₆ (65)	3 ⁷ / ₈ (99.8)	¾ (19.5)	1 ⁵ / ₈ (41)	1 ⁷ / ₃₂ (13.5)
NERO N / NS	Ø 2 ⁹ / ₁₆ (65)	4 ¹ / ₁₆ (103)	¾ (9.5)	2 (50.5)	1 ⁷ / ₃₂ (13.5)
CASSIUS Q	Ø 2 ⁹ / ₁₆ (65)	4 ⁵ / ₈ (117)	2 ⁹ / ₃₂ (23)	1 ¹¹ / ₁₆ (43.4)	1 ⁷ / ₃₂ (13.5)

IN (MM)



Knobs

- Mid-century inspired, contemporary door knobs that can accommodate nearly any modern decor
- Privacy function with auto-release
- Keyed entry function available
- Round or square rose

- 1 year mechanical warranty
- 1 year limited finish warranty
- Non-handed, zinc die-cast knob
- For doors $1\frac{3}{8}$ – $1\frac{3}{4}$ " (35–44.5 mm) thick
- Fits standard $2\frac{1}{8}$ " (54 mm) door preparation with 1" (25.4 mm) edge bore
- Steel tubular spring latch with adjustable $2\frac{3}{8}$ – $2\frac{3}{4}$ " (60–70 mm) backset
- 4-Way, mortise faceplate with square corners, convertible to drive-in
- Entry model includes 5-pin cylinder, Weiser keyway with 2 keys
- Full-lip strike with round corners included
- Other faceplate options available

AVAILABLE FUNCTIONS

- 10 Passage
- 42 Privacy, with auto-release
- 51 Entry
- 17 Single Dummy (surface)



ROSE

GEMINI
SATIN NICKEL

15 19



ROSE

GEMINI
SATIN NICKEL

15 19

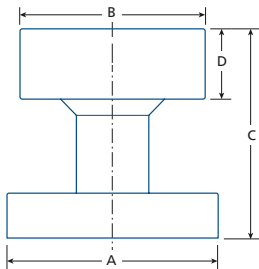
SELECTION GUIDE

V3X	42	G	S	–	15	MR
SERIES	FUNCTION	STYLE	ROSE ¹		FINISH	LATCH ²

(1) LEAVE BLANK FOR ROUND ROSE (2) 4-WAY LATCH BY DEFAULT; **MR**: FIXED MORTISE (RND)

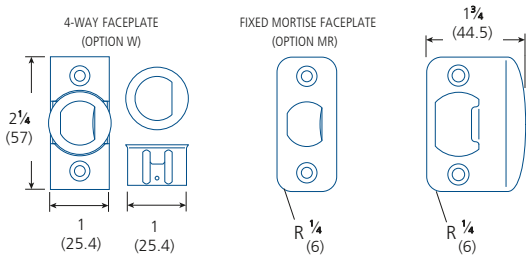
		10B	11P	15	15A	19	26D	3	4	5	53	/CASE†
		OIL RUB.	ANTIQUE	SATIN	ANTIQUE	MATTE	SATIN	POLISHED	SATIN	ANTIQUE	ANT. / POL.	
		BRONZE	BRONZE	NICKEL	NICKEL	BLACK	CHROME	BRASS	BRASS	BRASS	BRASS	
GEMINI	G/GS			●		●						24*

OTHER FINISHES AVAILABLE, MINIMUM ORDER QUANTITIES AND/OR ADDITIONAL DELIVERY TIMES MAY BE REQUIRED – PLEASE CONTACT
(†) DUMMY ARE 30/CASE (*) GEMINI ENTRY FUNCTION IS 12/CASE



	A	B	C	D
GEMINI	Ø 2 ⁹ / ₁₆	2 ¹ / ₄	2 ⁹ / ₁₆	7 ⁷ / ₈
G/GS	Ø (65)	(57)	(65)	(22)

IN (MM)



Deadbolt Locks

- Contemporary deadbolt lock styles for home and property security



METRO SQUARE
MATTE BLACK
SINGLE CYLINDER



- 20 Minute fire-rating model available
- 1 year mechanical warranty
- 1 year limited finish warranty
- For doors 1 $\frac{3}{8}$ –1 $\frac{3}{4}$ " (35–44.5 mm) thick
- Extension kit for 2 $\frac{1}{4}$ " (57 mm) thick doors available (#B1-EXT)
- Fits standard 2 $\frac{1}{8}$ " (54 mm) door preparation with 1" (25.4 mm) edge bore
- Steel 1" (25.4 mm) deadbolt latch with hardened steel security pin and adjustable 2 $\frac{3}{8}$ –2 $\frac{3}{4}$ " (60–70 mm) backset
- Mortise faceplate with square corners, convertible to drive-in
- 5-pin cylinder, Weiser keyway with 2 keys
- Strike for wood door frames included
- Other faceplate options available
- 5-pin Schlage cylinder available

AVAILABLE FUNCTIONS

- 51 Single cylinder with thumb-turn ➡



SELECTION GUIDE

SERIES¹	FUNCTION	STYLE²	FINISH	KEYING³	LATCH⁴
---------	----------	--------	--------	---------	--------

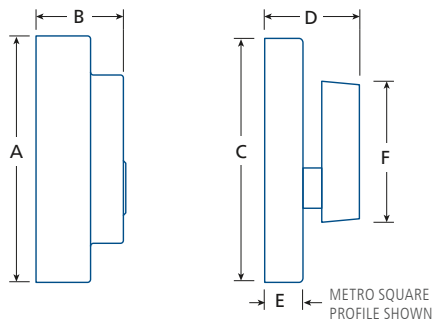
(1) **V11**: WEISER 5-PIN; **V12**: SCHLAGE 5-PIN. (2) **S**: SQUARE (3) **KA**: KEYED ALIKE **KD**: KEYED DIFFERENT (4) **M**: CONVERTIBLE MORTISE **FM**: FIRE-RATED, FIXED MORTISE (SQ CORNER)



For fire labelled wood doors **ONLY**. To order, specify V12 Schlage series lock with FM latch.

STYLE	10B OIL RUB. BRONZE	11P ANTIQUE BRONZE	15 SATIN NICKEL	15A ANTIQUE NICKEL	19 MATTE BLACK	26 POLISHED CHROME	26D SATIN CHROME	3 POLISHED BRASS	32D SATIN S.STEEL	4 SATIN BRASS	5 ANTIQUE BRASS	53 ANT. / POL. BRASS	/CASE
METRO SQUARE			■		■		■						24

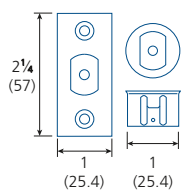
OTHER FINISHES AVAILABLE, MINIMUM ORDER QUANTITIES AND/OR ADDITIONAL DELIVERY TIMES MAY BE REQUIRED – PLEASE CONTACT



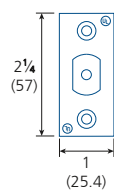
	A	B	C	D	E	F
METRO SQUARE	2 9/16 (65)	3/4 (20)	2 1/2 (63)	1 9/64 (29)	3/8 (9)	1 3/4 (44.5)

IN (MM)

CONVERTIBLE FACEPLATE
(OPTION M)



FIXED FACEPLATE
(OPTION FM)



STRIKE

