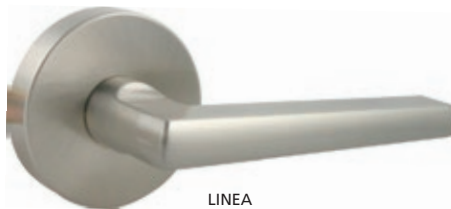
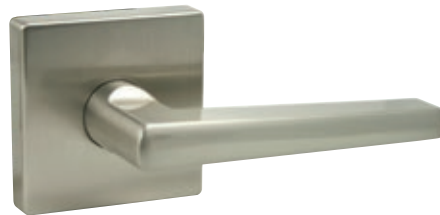




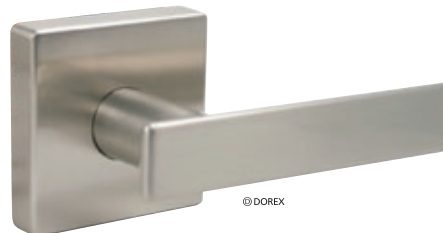
CIRCA  
SATIN NICKEL



LINEA  
SATIN NICKEL



© DOREX  
THE FLAT  
SATIN NICKEL



© DOREX

## SPECIFICATIONS

- Certifications**
- Conforms to ANSI/BHMA Grade 3
  - Meets ADA requirements
  - 20 minute fire-rating available with listed fire-can\*
  - 25 Year limited mechanical warranty
  - 5 Year limited finish warranty
- Door Thickness**
- 1 $\frac{3}{8}$ –2" (35–51 mm)
  - 2 $\frac{1}{4}$ " (57 mm) extension kit available (#TDK100TE)
- Handing**
- Non handed
- Backset**
- 2 $\frac{3}{8}$  – 2 $\frac{3}{4}$ " (60–70 mm), adjustable
- Spring Latch**
- Stainless steel
  - $\frac{1}{2}$ " (12.7 mm) throw
- Faceplate**
- Convertible mortise/drive-in type, square corner
  - Preset to mortise (M) or to drive-in (V)
  - 1 x 2 $\frac{1}{4}$ " (25.4 x 57 mm)
- Other options available*
- Strike**
- Full-lip strike, round corner
  - 1 $\frac{3}{4}$  x 2 $\frac{1}{4}$ " (44.5 x 57 mm)
  - ASA Strike for metal door frame – available
- Trim**
- Zinc die-cast lever
  - Steel base, brass rose
  - Round or square rose (S)
- Chassis**
- Concealed mounting screws
  - All mounting hardware included
  - Dummy includes surface and thru-bolt mounting hardware
- Preparation**
- Cross bore: 2 $\frac{1}{8}$ " (54 mm)
  - Edge bore: 1" (25.4 mm)
- Function**
- 10 Passage
  - 42 Privacy, with auto-release
  - 5 Dummy, single (surface / thru-bolt)
  - 3 Handleset interior trim\*
- (\* Handleset trim includes lever spring latch)*
- Lever Style** See Selection guide.
- Finish** See Selection guide.

100	10	FT	S	15	M	—
SERIES	FUNCTION <sup>1</sup>	STYLE	ROSE <sup>2</sup>	FINISH	LATCH <sup>3</sup>	OPTION <sup>4</sup>

(1) OMIT FUNCTION WHEN ORDERING DUMMY OR HANDLESET TRIM OPTION  
 (2) BLANK : ROUND S: SQUARE (3) M: MORTISE V: DRIVE-IN (4) -3: HANDLE TRIM -5: DUMMY

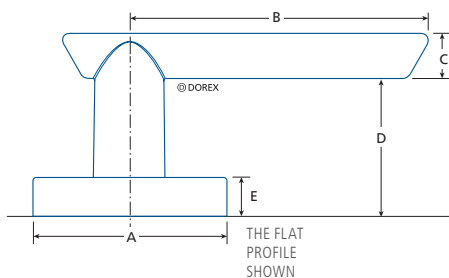


(\* Fire-can must be ordered in conjunction with lockset, not available separately. For fire labelled wood doors ONLY.

## SELECTION GUIDE

	10B OIL RUB. BRONZE	11P ANTIQU BRONZE	15 SATIN NICKEL	15A ANTIQU NICKEL	19 MATTE BLACK	26 POLISH CHROME	26D SATIN CHROME	3 POLISH BRASS	32D SATIN S.STEEL	4 SATIN BRASS	5 ANTIQU BRASS	V3* POLISH BRASS	/CASE†
<b>CIRCA</b>	CT		•		•	•	•						10
<b>LINEA</b>	LT		•		•	•	•						10
<b>THE FLAT</b>	FT		•		•	•	•						10

OTHER FINISHES AVAILABLE, MINIMUM ORDER QUANTITIES AND/OR ADDITIONAL DELIVERY TIMES MAY BE REQUIRED – PLEASE CONTACT (\*) LIFETIME FINISH WARRANTY (†) DUMMY ARE 20/CASE



	A	B	C	D	E
<b>CIRCA</b>					
CT	∅ 2 $\frac{9}{16}$ (64.5)	4 (101.6)	1 $\frac{9}{32}$ (15)	1 $\frac{3}{4}$ (45)	$\frac{1}{2}$ (12.7)
<b>LINEA</b>					
LT / LTS	∅ 2 $\frac{9}{16}$ (64.5)	4 (101.6)	$\frac{25}{32}$ (20)	1 $\frac{9}{16}$ (40)	$\frac{1}{2}$ (12.7)
<b>THE FLAT</b>					
FT / FTS	∅ 2 $\frac{9}{16}$ (64.5)	4 (101.6)	$\frac{37}{64}$ (14.7)	1 $\frac{25}{32}$ (45.3)	$\frac{1}{2}$ (12.7)

IN (MM)

