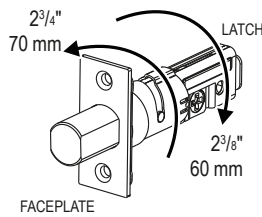


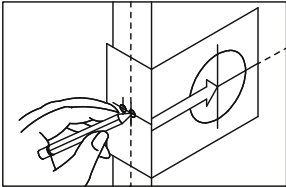
1 ADJUST TO REQUIRED BACKSET

To adjust the backset hold the faceplate and :

- Turn the latch to the RIGHT or clockwise (CW) for a 2³/₄" (70 mm) backset .
- Turn the latch to the LEFT or counter-clockwise (CCW) for a 2³/₈" (60 mm) backset.



2 MARK & DRILL HOLES



NOTE: Drill the 2¹/₈" (54 mm) hole from BOTH SIDES of the door to avoid splitting or damaging the door surface.

- Determine desired backset. Backset on door should be the same as backset of the deadbolt latch.
- Determine the desired lock height from the finished floor and mark the lock's height centerline.
- Fold template over door edge at marked height and mark the center of the 2¹/₈" (54 mm) hole on door surface at required backset and drill.
- Determine thickness of the door and make center mark for 1" (25.4 mm) on the door edge and drill. Drill 3¹/₃₂" (25 mm) for drive-in installations.

REQUIRED TOOLS:

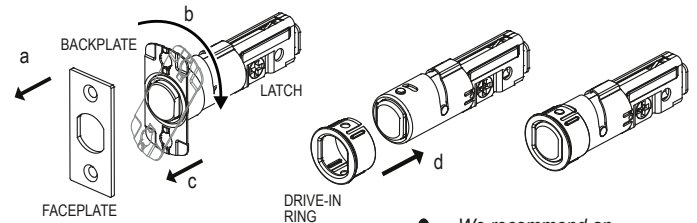
- Phillips flat-head screwdriver
- 1" (25.4 mm) chisel
- 1" (25.4 mm) drill bit
- 2¹/₈" (54 mm) hole saw



Do not use power tools when installing door hardware, excessive screw or bolt tightening may affect installation or functioning of the hardware.

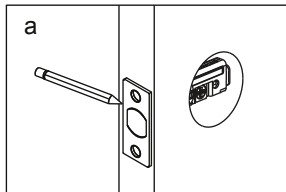
CONVERT MORTISE LATCH TO DRIVE-IN

- Use flat-head screw driver to pry the faceplate off the backplate
- Rotate or twist the backplate clockwise.
- Remove backplate from the latch.
- Insert drive-in ring as shown until ring snaps into position.

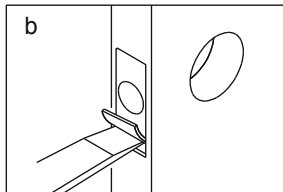


We recommend an edge-bore of 3¹/₃₂" (25 mm) diameter for a tighter fit.

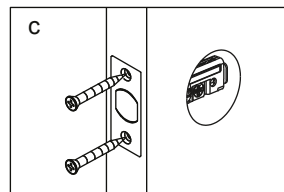
3 INSTALL DEADBOLT LATCH (WOOD DOOR)



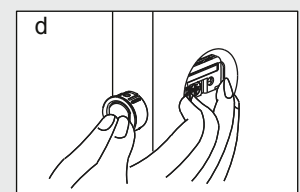
Insert latch in edge hole and orient it vertically as shown. Trace the outline of the faceplate and remove the latch.



Chisel 5¹/₃₂" (4 mm) deep or until the faceplate is flush with the door edge.
FACEPLATE SIZE:
1 x 2¹/₄" (25.4 x 57 mm)



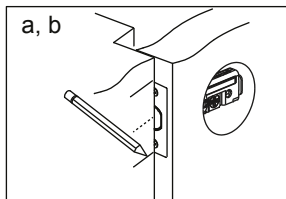
Insert latch and secure with screws. To avoid wood splitting, drill pilot holes for the screws first.



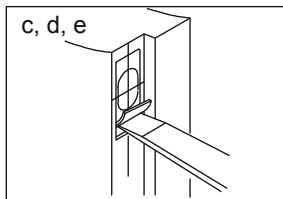
FOR DRIVE-IN

Insert latch in to the hole as shown until flush with door edge. Use a rubber mallet or wood block and hammer if necessary.

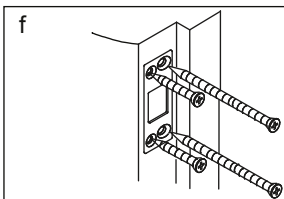
4 INSTALL STRIKE (WOOD FRAME)



- Close the door as shown to mark the centerline of the strike.
- Transfer horizontal centerline mark to the inside surface of the frame and measure one half (1/2) the door thickness from the door stop to locate the vertical centerline of the strike.



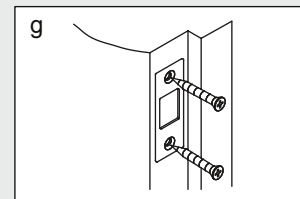
- Drill a 1" (25.4 mm) hole 1¹/₄" (32 mm) deep at the intersection of the vertical and horizontal centerlines.
- Match strike screw holes with vertical centerlines on jamb and trace outline.
- Chisel outline 1¹/₁₆" (1.5 mm) deep. Strike should be flush with jamb surface.



Insert strike and secure using 3" (76 mm) long wood screws and #8 x 1¹/₈" (32 mm) combo screws as shown.



1¹/₈ x 2³/₄", 1/4" radius corners
29 x 70 mm, 6 mm radius corners



FOR METAL FRAME

Prepare frame for 1¹/₈ x 2³/₄ x 1¹/₁₆" (29 x 70 x 1.6 mm) strike. Insert strike and secure using #8 x 1¹/₈" (32 mm) combo screws as shown.



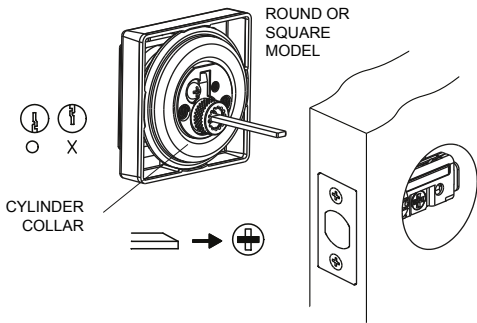
1¹/₈ x 2³/₄"
29 x 70 mm

5 INSTALL DEADBOLT - SINGLE CYLINDER

EXTERIOR CYLINDER

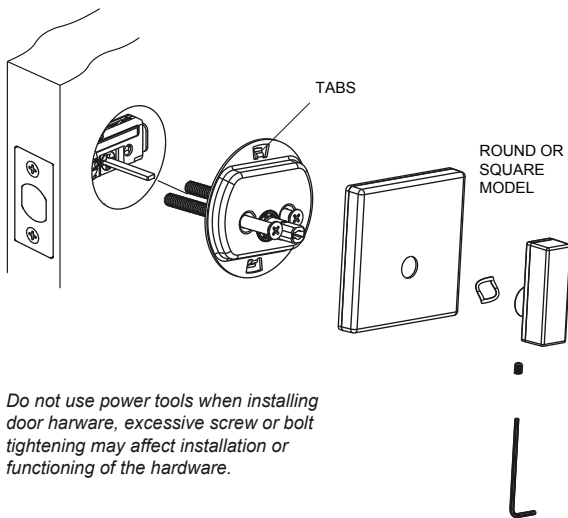
Tapped holes in the housing of exterior cylinder should be lined up with the screw holes of the latch. Key hole should be in down position and the tailpiece should be horizontal as shown.

! Remove spacer ring inside the cylinder collar (see to the right). It is only required for installations with a firecan.



INTERIOR THUMBTURN

Align interior thumbturn base plate with cylinder tailpiece and assemble using supplied mounting bolts. Place square or round rose over the base plate, then washer and thumbturn. Secure thumbturn with set screw.



! Do not use power tools when installing door hardware, excessive screw or bolt tightening may affect installation or functioning of the hardware.

INSTALLATION WITH FIRECAN

The deadbolt requires modification prior to installation with a firecan on a fire labelled wood door:

! Firecan is NOT INCLUDED. Must be ordered in conjunction with deadbolt.

a. Remove cylinder collar from exterior cylinder.

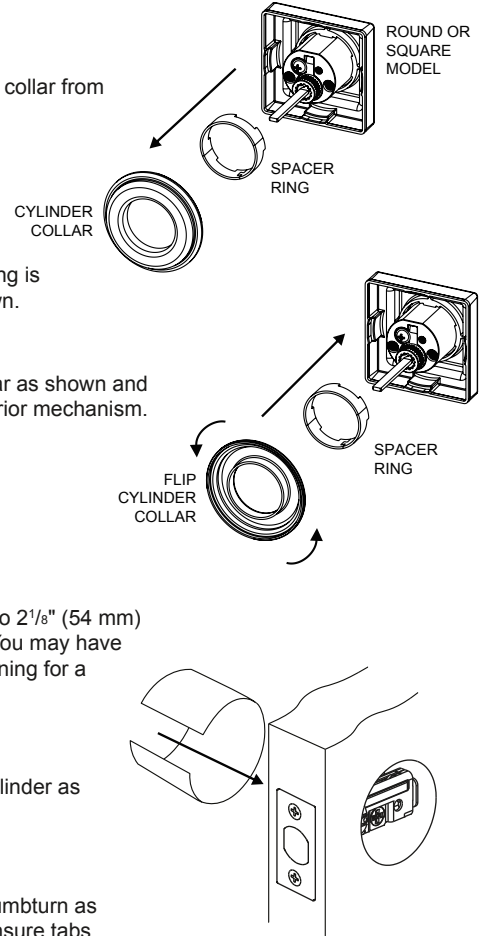
b. Ensure spacer ring is installed as shown.

c. Flip cylinder collar as shown and reassemble exterior mechanism.

d. Insert Firecan into 2 1/8" (54 mm) hole as shown. You may have to adjust the opening for a proper fit.

e. Install exterior cylinder as per Section 5.

f. Install interior thumbturn as per Section 5. Ensure tabs are INSIDE of the firecan.



INSTALLATION TEMPLATE

FOLD HERE
PLACE ON DOOR EDGE

Drill 1" (25.4 mm) hole on door edge at the center of the door thickness

INCH	MM
1 3/4	45
1 9/16	40
1 3/8	35

! Do not use template if not to scale. To verify, confirm dimensions.

FOR BACKSET
2 3/8" (60 mm)

FOR BACKSET
2 3/4" (70 mm)

